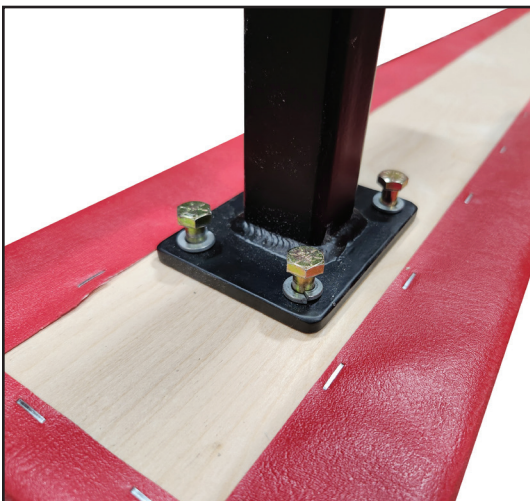


Beam Table

SKU: DGS-BEAMTABLE

Recommended Tools:

- 1/2" Wrench



Step 1:

Flip the **Beam Table Head** upside down and position the **Beam Table Leg** so it aligns with the holes. Insert a **5/16 Lock Washer** and **5/16-18 Bolt** into each of the four holes. Hand tighten until secure.

Step 2:

Repeat Step 1 for the other **Beam Table Leg**, and then flip the unit upright.

Part Number	Part Description	Quantity
DGS-BEAMTABLEHEAD	Beam Table Head	1
DGS-BMTABLELEG	Beam Table Leg	2
0115062	5/16-18 Bolt	8
1133892	5/16 Lock Washer	8

Need help?

Call 1-800-932-3339 or
 Email info@gymsupply.com